

Semi-Automatic Tape Casting Machine (Model : STC-14A)

輸入 開發 TAPE CASTING MACHINE. **Model STC-14A** 外國
 , 高價 大量生産 差別化 研究, 學術, 製作

精確 TAPE CASTING MACHINE. **Model STC-14A** BLADE THICKNESS GAUGE
 가 , 가 Green Sheet HEAD 設計,
 Green Sheet 工程
 Material 使用 , TAPE CASTER

Applications : Multi-layer Ceramic Package
 LTCC
 Chip-Inductor
 LCR filter . MLCC
 가 ,
 Ceramic ,
 GREEN SHEET



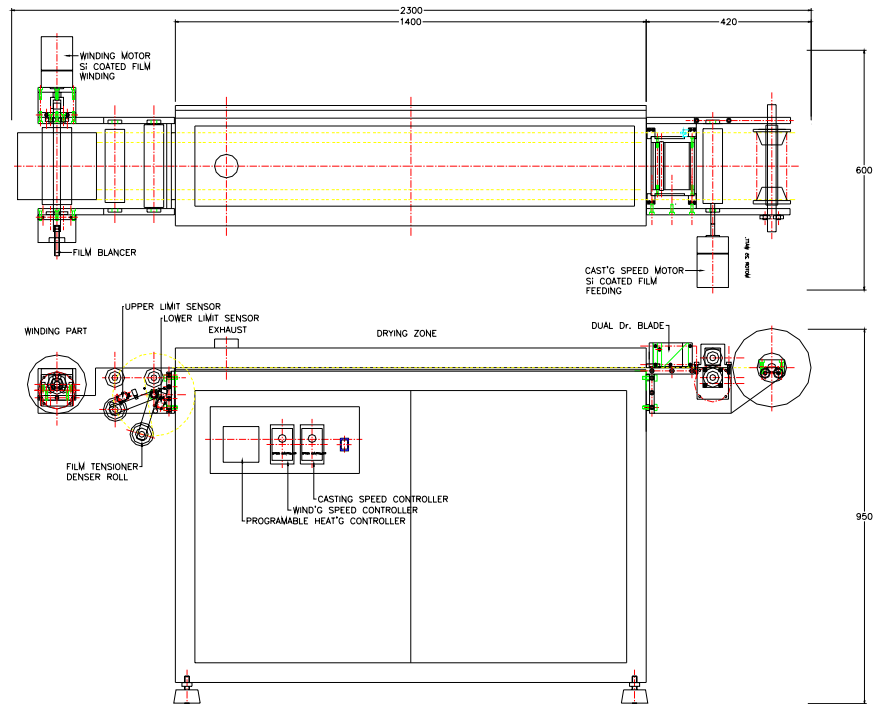
TAPE CASTING MACHINE (Model STC-14A)

*

Machine Specification (Model STC-14A)

1. 가 GREEN SHEET : 170 mm (가 .)
- 가 GREEN SHEET : 1.4 meter (가 .)
2. : THICKNESS Gauge DUAL DOCTOR
BLADE Green Sheet 가 .
3. 가 Speed : 500 - 1,500 mm / min. 가 . (가 .)
AC GEARED MOTOR .
4. TENSION MECHANISM : CYLINDER FILM
IDAL ROLLER(Tensioner) SLIP .
5. DRYING ZONE : HEATING (- 90) :
Programable Heating Controller .
6. MACHINE SIZE : 2300 × 600 × 950 mm (W × D × H)
7. UTILITY : - : 220 VAC 2,000 WATT MAX.

* TAPE CASTING MACHINE



MANUFACTURER :

SALES :

()

1 407-5

TEL : 02-2249-5235

FAX : 02-2246-5946

E-MAIL : ehansung@hotmail.com



STC-14A Dual Dr. Blade (/ 0.01 mm)