

## Automatic Tape Casting Machine (Model : STC-28A)

輸入 開發 TAPE CASTING MACHINE. Model STC-28A 外國  
 , 高價 大量生産 差別化 研究, 學術, 製作  
 TAPE CASTING MACHINE. Model STC-28A DUAL DOCTOR BLADE  
 THICKNESS GAUGE 精確 가 , 가 Green Sheet HEAD  
 Material 使用 GREEN SHEET 設計,  
 TAPE CASTER

**Applications :** Multi-layer Ceramic Package  
 LTCC  
 Chip-Inductor  
 LCR filter MLCC  
 Ceramic GREEN SHEET

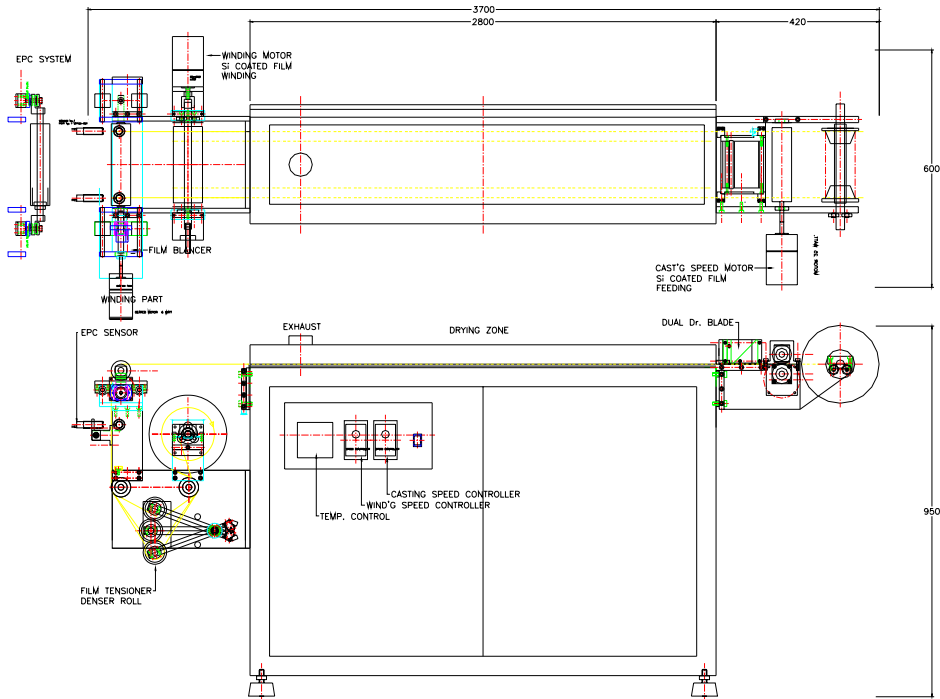


TAPE CASTING MACHINE (Model STC-28A)

\*

## Machine Specification (Model STC-28A)

1. 가 GREEN SHEET : 120 mm ( 가 .)  
가 GREEN SHEET : 2800 mm ( 가 .)
  2. : THICKNESS Gauge DUAL DOCTOR  
BLADE Green Sheet 가 .
  3. BLADE Green Sheet 가 가 Speed : 300 - 1,000 mm / min. 가 .  
AC GEARED MOTOR
  4. TENSION MECHANISM : CYLINDER FILM  
IDAL ROLLER(Tensioner) SLIP
  5. DRYING ZONE : 3 ZONE : 1. Dummy Leveling Zone 2. 1st Heating Zone ( - 120 ).  
3. 2nd Heating Zone ( - 120 ).
  6. EPC (Edge Point Control) System : Film EPC SYSTEM
  7. MACHINE SIZE : 2300 × 600 × 1200 mm (W × D × H)
  8. UTILITY : - : 220 VAC 2,000 WATT MAX.  
: NONE
- \* TAPE CASTING MACHINE



**MANUFACTURER :**

**SALES :**

( )

4 773

TEL : 02-2249-5235

FAX : 02-2249-2157

E-MAIL : [ehansung@hotmail.com](mailto:ehansung@hotmail.com)

CAT No. 020409K